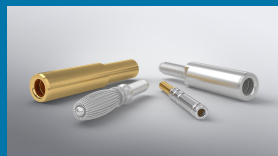
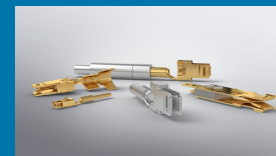




ODU LAMTAC®



ODU SPRINGTAC®



ODU SPRINGTAC® Flatsocket



ODU TURNTAC®

Primary attribute	High temperature & current	High mating cycles	High mating cycles	Rugged
Contact technology	Lamella technology	Springwire technology	Springwire technology	Turned, slotted contacts
Contacting	19 lamella louvres with 2 contact points each (size Ø 6 mm)	44 wire springs (size Ø 6 mm)	30 wire springs (size 6.3 x 0.8 mm)	4 contact fingers (size Ø 6 mm)
Nominal current	115 A (size Ø 6 mm)	110 A (size Ø 6 mm)	27 A (size 6.3 x 0.8 mm)	100 A (size Ø 6 mm)
Angular misalignment	+/- 1°	+/- 1°		+/- 5°*
Mating cycles	> 10,000	> 100,000	> 50,000	> 10,000
Temperature range standard version	-40 °C to 150 °C	-40 °C to 125 °C	-40 °C to 125 °C	-40 °C to 125 °C
Contact size**	from Ø 1.5 mm	from Ø 0.76 mm	from 0.64 x 0.64 mm	from Ø 1.5 mm
Standard plating	Ag / Au	Ag / Au	Ag / Au	Ag / Au
Crimp termination	•	•	•	•
Screw termination	•	•	•	•
For busbars (through-hole design)	•	•		•***

\* Max. 5° misalignment in the assembly position with a correspondingly designed contact chamber

\*\* Other sizes on request

\*\*\* Optional