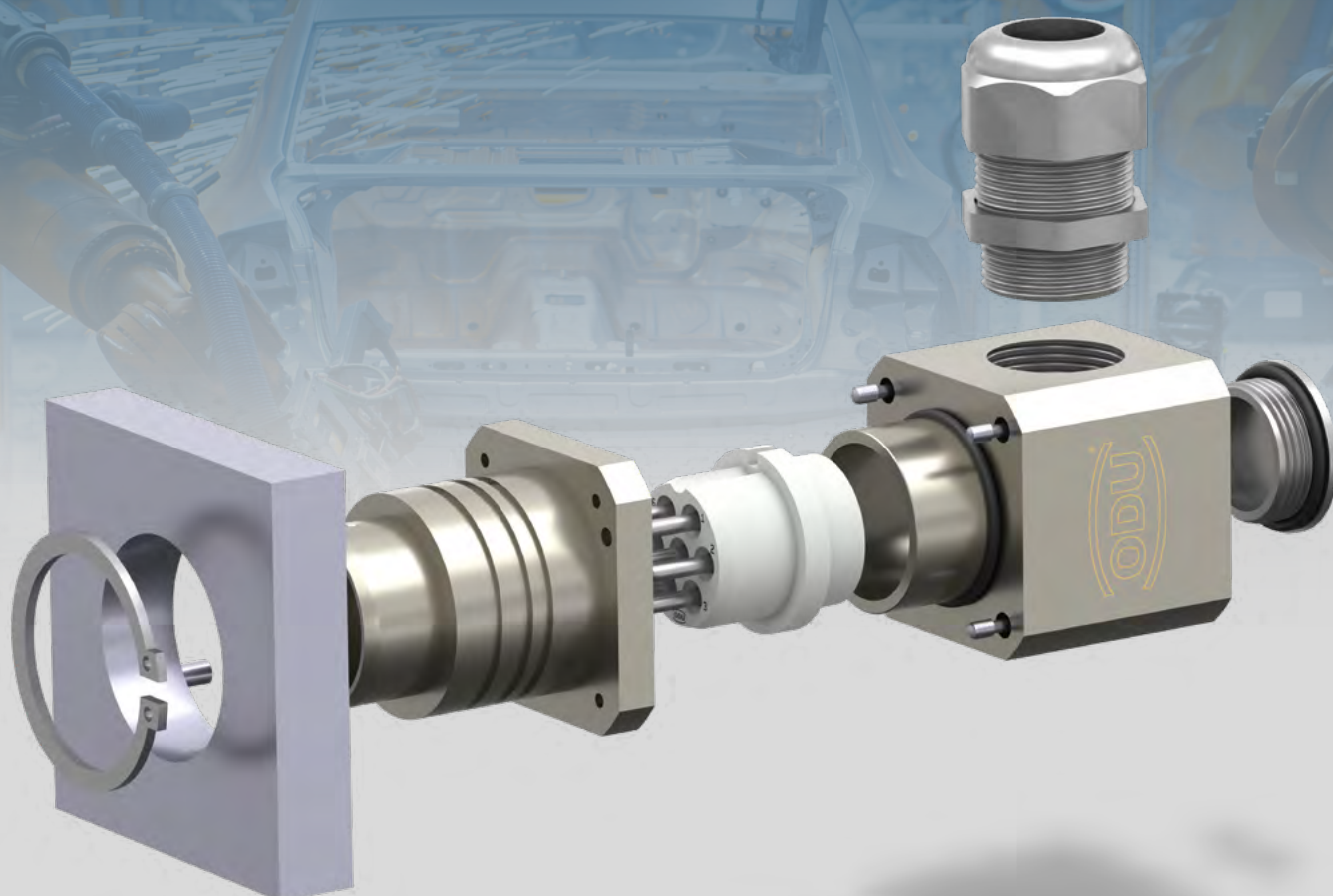


ODU DOCK

Silver-Line

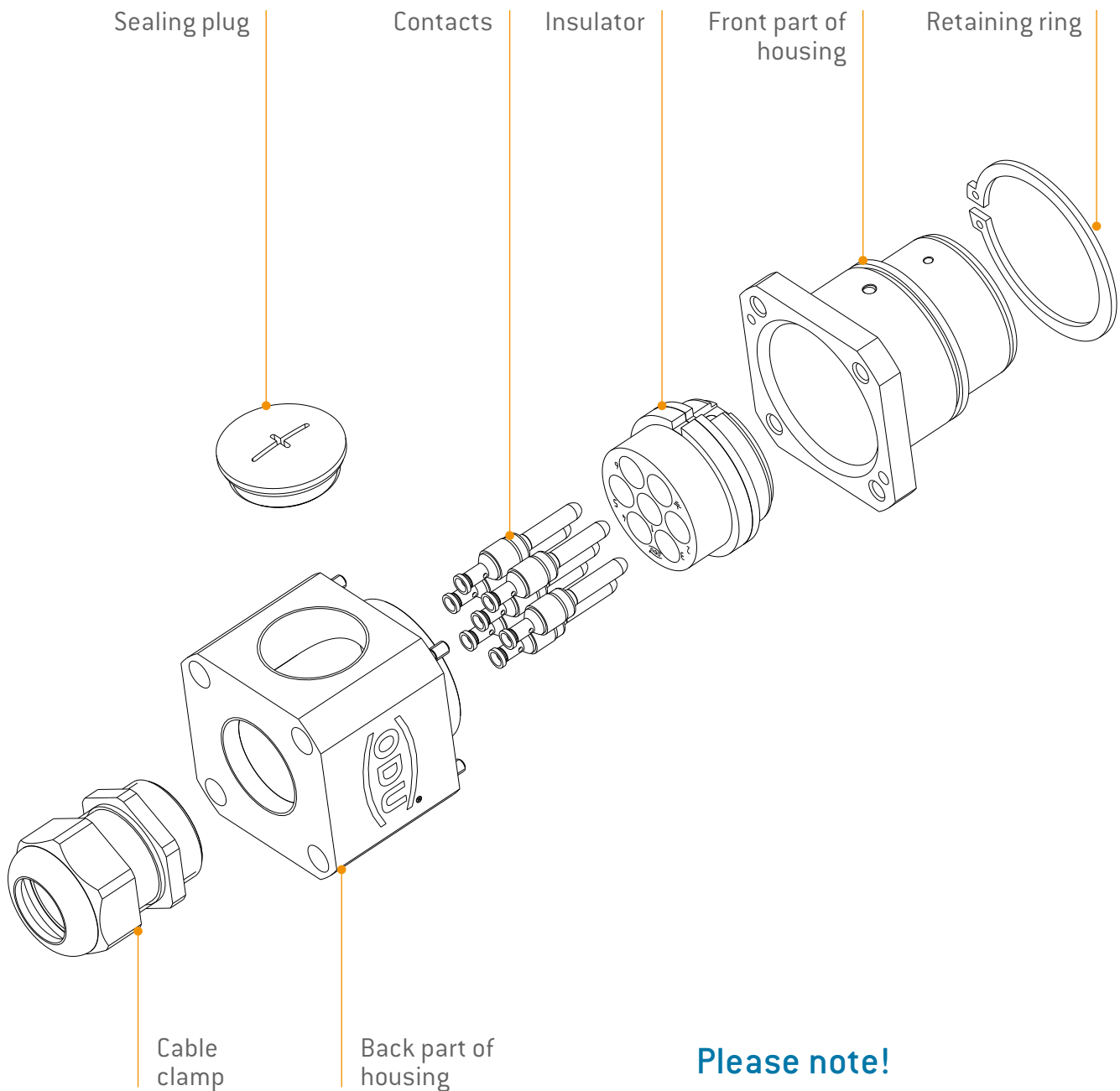
Assembly instruction for ODU DOCK Size 1/2/3 and
Quick Change Head (QCH)



ASSEMBLY INSTRUCTIONS

ODU DOCK ASSEMBLY	03 – 08
ODU DOCK PANEL CUT OUT	09

ODU DOCK SILVER-LINE SIZE 1/2/3



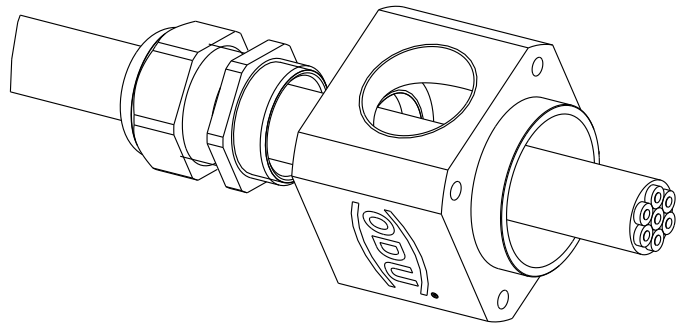
**FAILURE TO OBSERVE THESE SPECIFICATIONS
MAY RESULT IN DAMAGE.**

Please note!

- ▶ The guiding system of ODU DOCK Silver-Line requires additional guiding hardware for the system on the docking plate.
- ▶ The distance between the housing frontside of the connector in mated condition is 61 ± 0.5 mm ([see page 8](#)).
- ▶ An alignment system is necessary. The max. permissible alignment error is less than ± 0.05 mm.

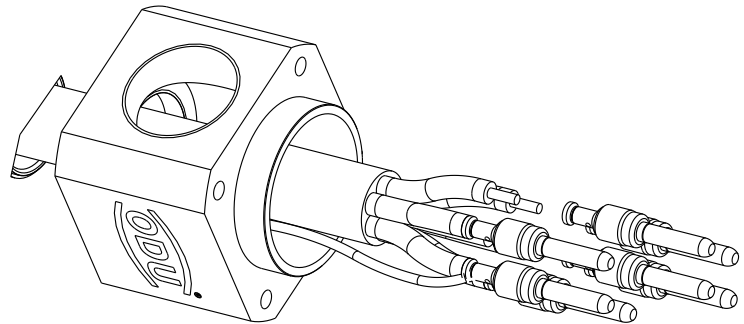
Step 1

- ▶ Insert cable in cable clamp and housing backside.



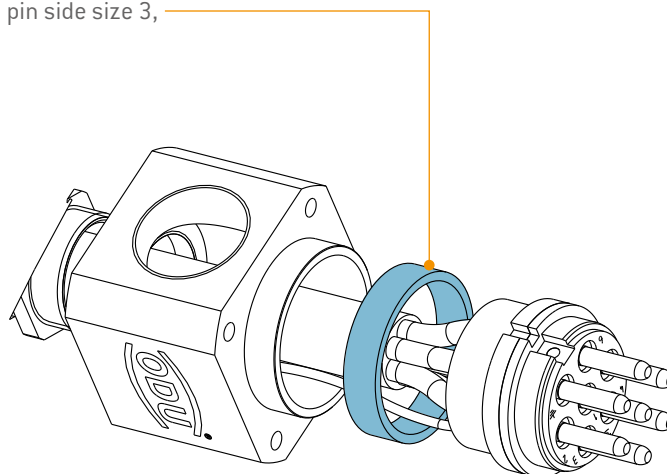
Step 2

- ▶ Strip insulation from both jacket and conductor.
- ▶ Crimp contacts.
- ▶ For metal housings crimp the PE-cable of housing and cable together into the PE-contact.
(for crimp information see [catalog ODU-MAC® Silver-Line](#) | [ODU DOCK Silver-Line](#))



Step 3

- ▶ Insert the contacts into the insulator.
(Optional: **Ring**, only available on pin side size 3, in front of the insulator)



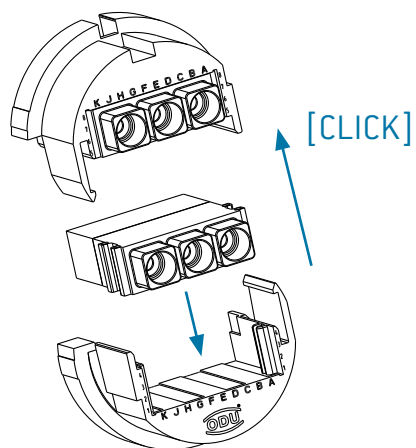
Optional Steps ODU-MAC[®] Adapter

for ODU DOCK Silver-Line Size 3

[Replace Step 3]

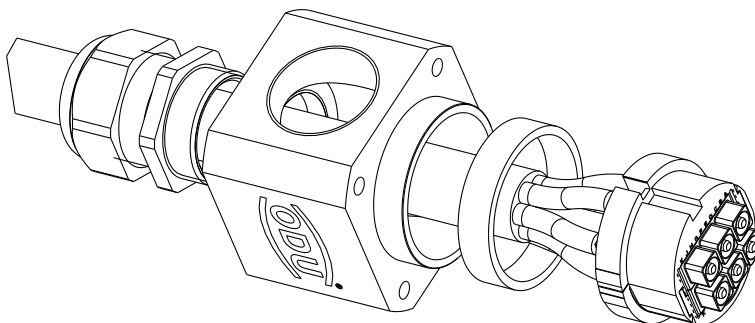
Step 3a

- Insert the ODU-MAC[®] modules into the adapter half shell afterwards push the loaded adapter halves together until they snap audibly into place.



Step 3b

- Insert the contacts into the insulator see [ODU-MAC[®] Silver-Line Assembly Instructions](#)



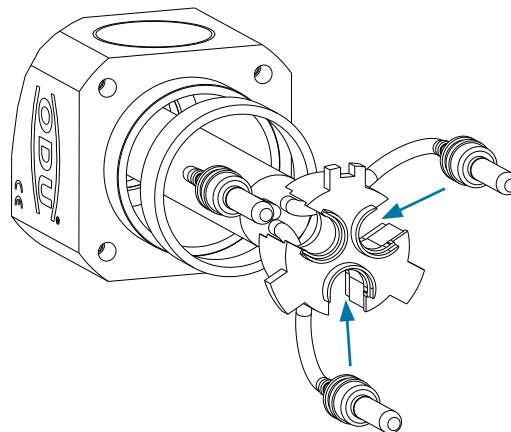
Optional steps for insert 2+PE and 4+PE

for ODU DOCK Silver-Line Size 3

[Replace step 3]

Step 3a

- Snap contacts laterally into the lower insulating body.

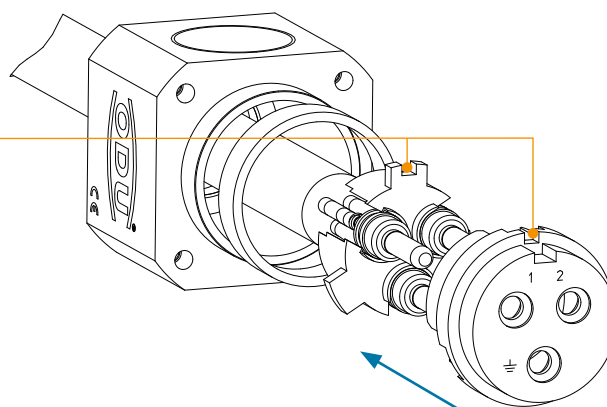


Step 3b

- Place the upper insulating body onto the lower insulating body and together.

ATTENTION!

Attention: **Locking groove** must fit together for upper and lower part

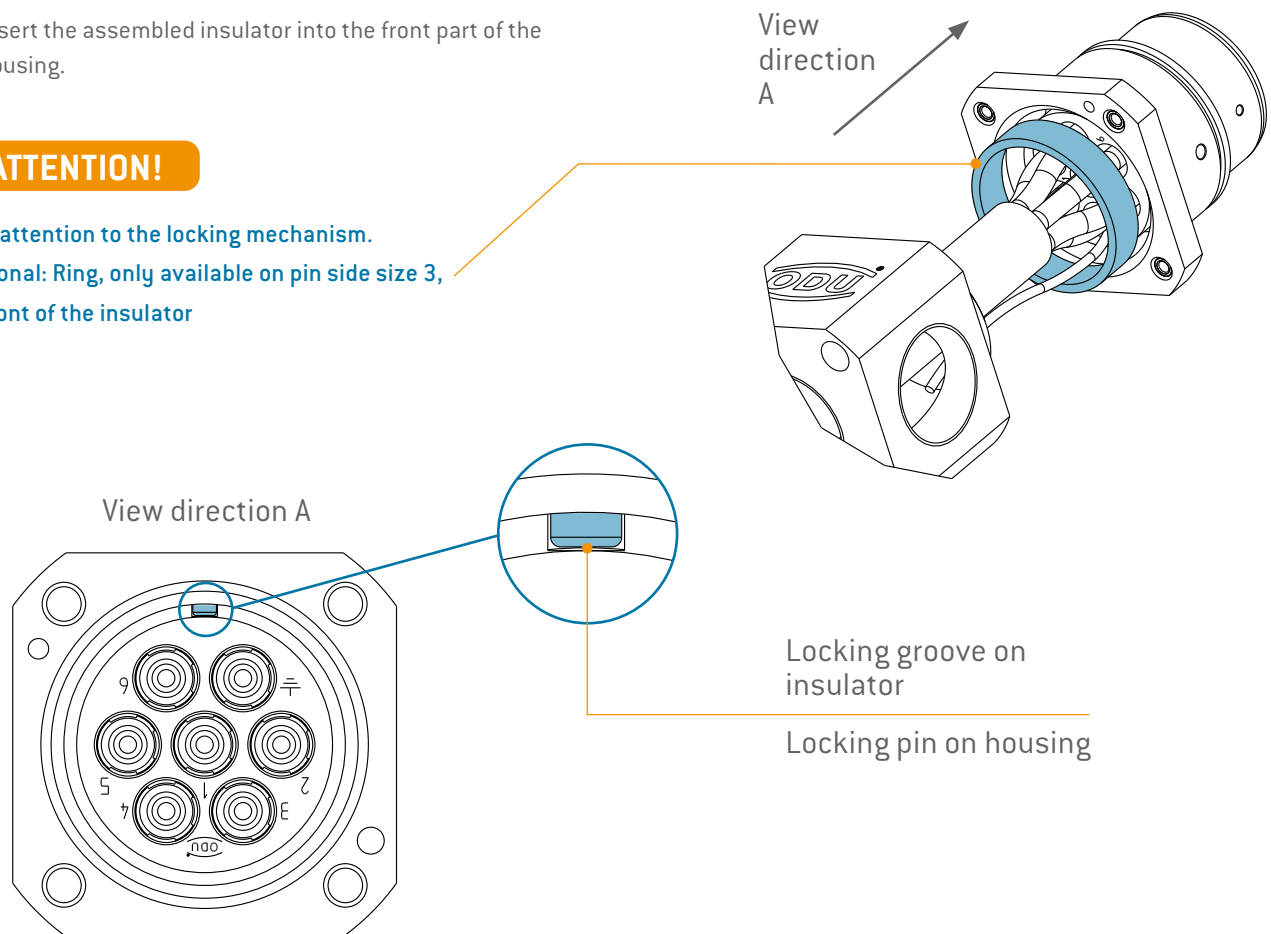


Step 4

► Insert the assembled insulator into the front part of the housing.

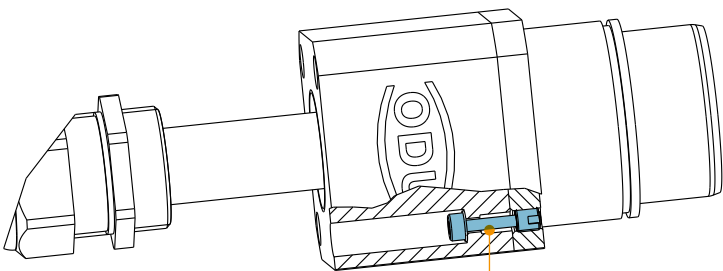
ATTENTION!

Pay attention to the locking mechanism.
Optional: Ring, only available on pin side size 3, in front of the insulator



Step 5

► Screw the front and rear housings together with the tightening torque according to the table.



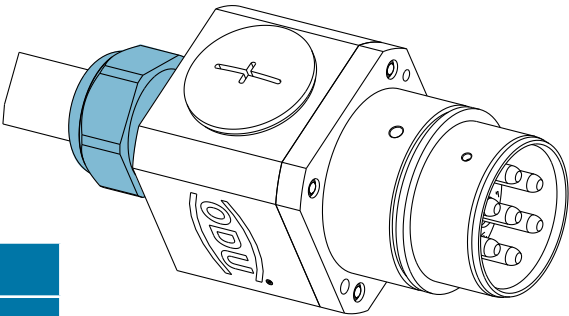
Size 1/2: M3 inside hexagonal
Size 3: M4 inside hexagonal

Size	1	2	3
Torque	0.8 Nm	0.8 Nm	2 Nm

Step 6

- ▶ Tighten cable clamp according to manufacturer's torque and mount blind plug on free cable outlet.

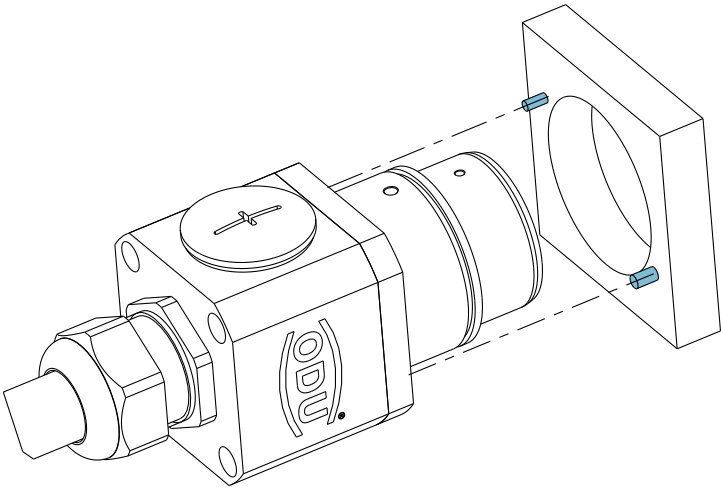
Size	1		2		3	
Material	Metal	Plastic	Metal	Plastic	Metal	Plastic
Cable clamp tightening torque	12 Nm	6 Nm	12 Nm	8 Nm	18 Nm	10 Nm



Step 7

- ▶ Push the ODU DOCK Silver-Line into the docking plate.
- ▶ Make sure that the locking pins are in the correct position.

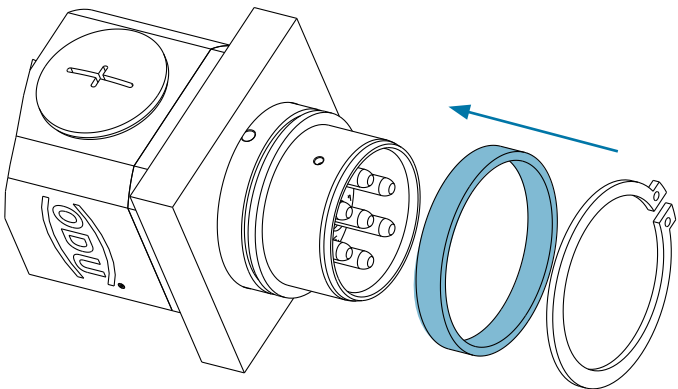
The panel cut out can be found on the next page.



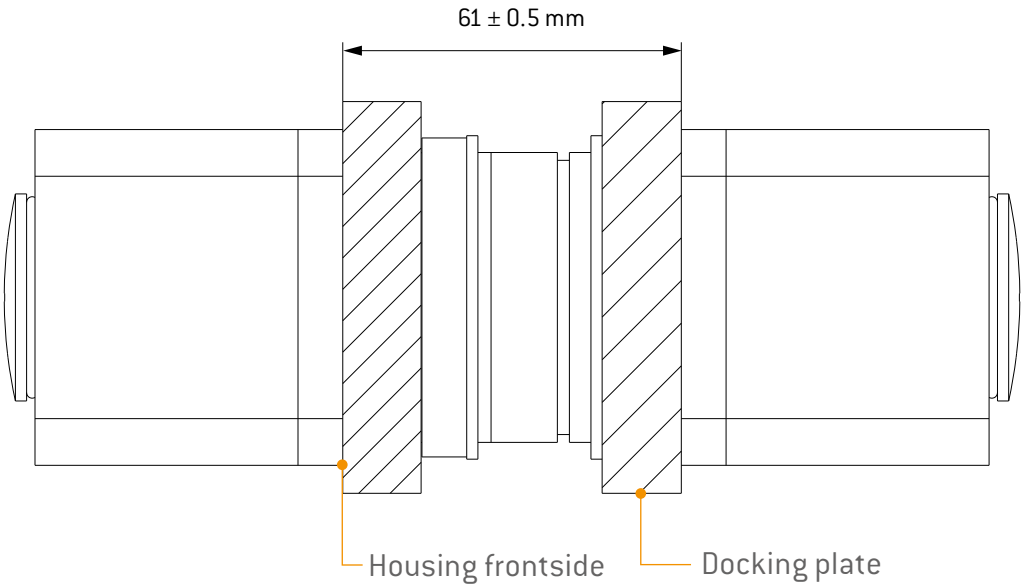
Step 8

- ▶ Depending on the thickness of the docking plate, push on the corresponding **spacer ring** and secure with the locking ring.

ODU DOCK Silver-Line in mated condition can be found on the next page.



ODU DOCK Silver-Line in mated condition



Panel cut out

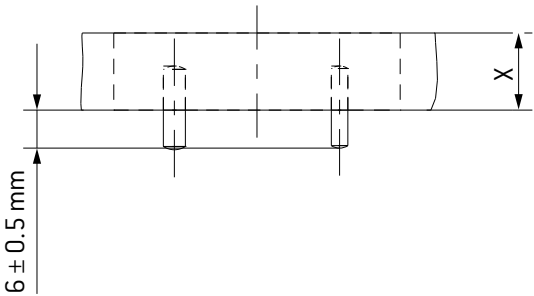
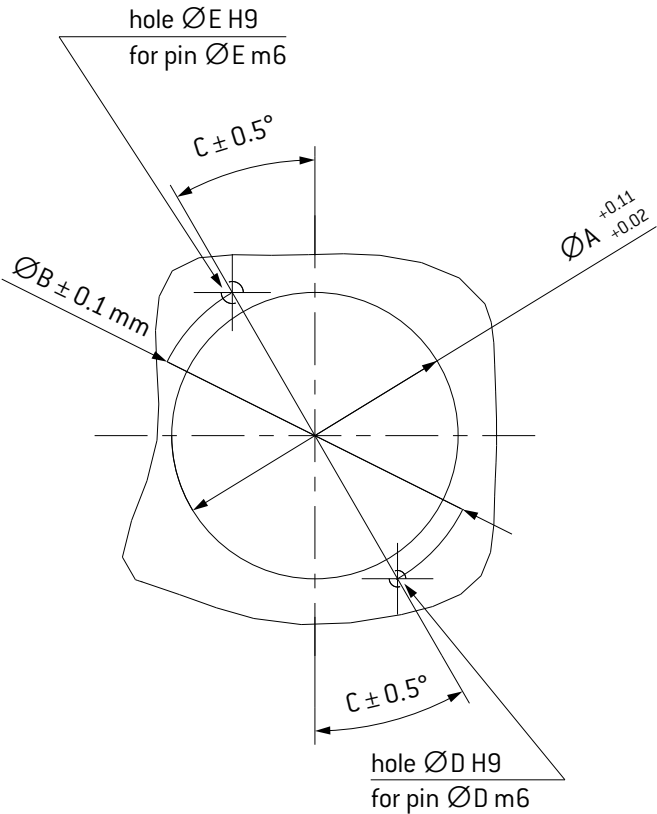
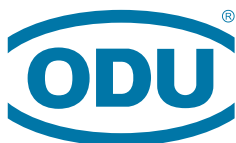


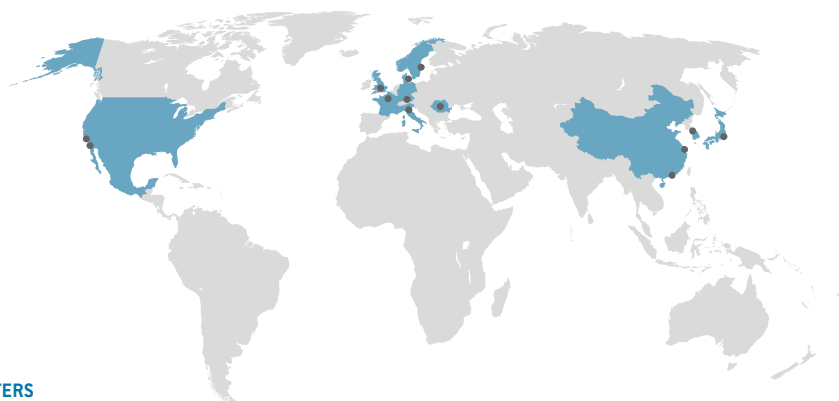
Plate thickness X
20 mm ± 0.1
14 mm ± 0.1
10 mm ± 0.1



Dimensions in mm	Size 1	Size 2	Size 3
A	28	38	52
B	34	46	60
C	25	30	30
D	2	3	3
E	3	4	4



ODU GROUP WORLDWIDE



HEADQUARTERS

ODU GmbH & Co. KG

Pregelstraße 11, 84453 Mühldorf a. Inn, Germany

Phone: +49 8631 6156-0, Fax: +49 8631 6156-49, E-mail: sales@odu.de

SALES LOCATIONS

ODU (Shanghai)

International Trading Co., Ltd.

Phone: +86 21 58347828-0

E-mail: sales@odu.com.cn

www.odu.com.cn

ODU (HK) Trading Co., Ltd.

Phone: +852 3963-9588

E-mail: sales@odu.hk

www.odu.hk

ODU Denmark ApS

Phone: +45 2233 5335

E-mail: sales@odu-denmark.dk

www.odu-denmark.dk

ODU-France SARL

Phone: +33 1 3935-4690

E-mail: sales@odu.fr

www.odu.fr

ODU Italia S.R.L.

Phone: +39 331 8708847

E-mail: sales@odu-italia.it

www.odu-italia.it

ODU Japan K.K.

Phone: +81 3 6441 3210

E-mail: sales@odu.co.jp

www.odu.co.jp

ODU Korea Inc.

Phone: +82 2 6964 7181

E-mail: sales@odu-korea.kr

www.odu-korea.kr

ODU Romania Manufacturing SRL

Phone: +40 269 704638

E-mail: sales@odu-romania.ro

www.odu-romania.ro

ODU Scandinavia AB

Phone: +46 176 18262

E-mail: sales@odu.se

www.odu.se

ODU-UK Ltd.

Phone: +44 330 002 0640

E-mail: sales@odu-uk.co.uk

www.odu-uk.co.uk

ODU-USA Inc.

Phone: +1 805 484-0540

E-mail: sales@odu-usa.com

www.odu-usa.com

Further information and specialized representatives can be found at:

www.odu-connectors.com/contact

PRODUCTION AND LOGISTICS SITES

Germany Otto Dunkel GmbH

China ODU (Shanghai) Connectors Manufacturing Co., Ltd.

Mexico ODU Mexico Manufacturing S. de R.L. de C.V.

Romania ODU Romania Manufacturing SRL

USA ODU North American Logistics Inc.



Simply scan the QR code
to download the entire publication.

All dimensions are in mm. Some figures are for illustrative purposes only. Subject to change without notice. Errors and omissions excepted. We reserve the right to change our products and their technical specifications at any time in the interest of technical improvement. This publication supersedes all prior publications. This publication is also available as a PDF file that can be downloaded from www.odu-connectors.com